

**THE COLUMBIA RIVER SERIES**

The Columbia River

**2024**

**27' x 60'**

DIMENSIONS

**1,600** sf

LIVING SPACE

**3**

BEDROOMS

**2**

BATHROOMS

**OVERVIEW**

60' Double Wide with 9ft Ceilings and Large Walk In Pantry

Heritage Home Center

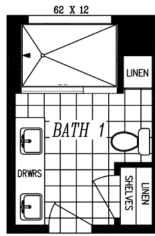
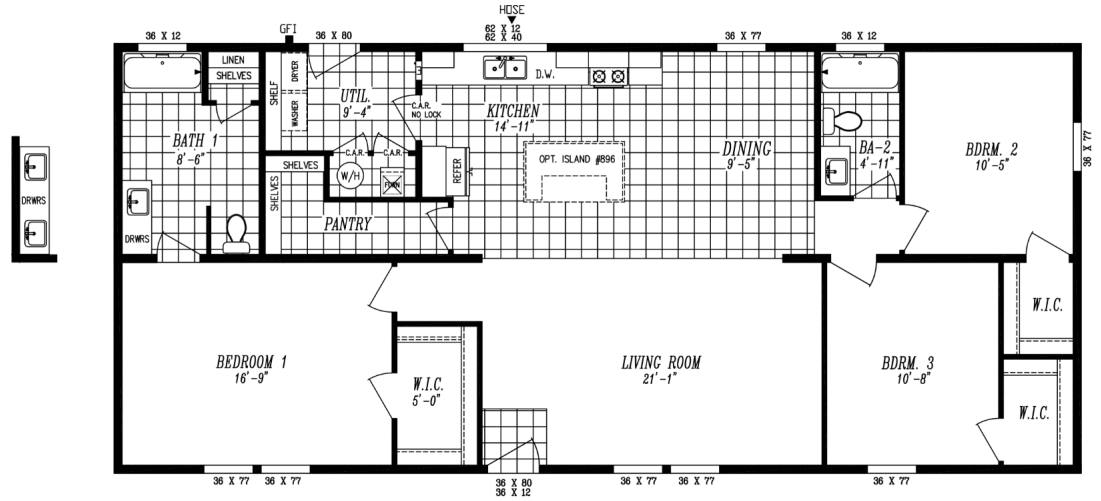
**(425) 353-5464**

or **Request Firm Quote**

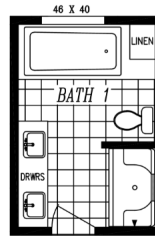
EMAIL US

**01 FLOOR PLAN**

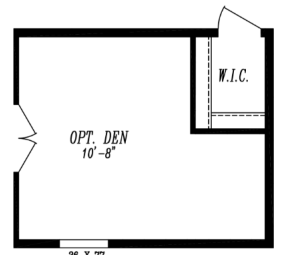
1,600 SQ FT · 27' x 60'



OPT. 48x72 SHWR.  
W. DBL LAVS



OPT. DLX BATH

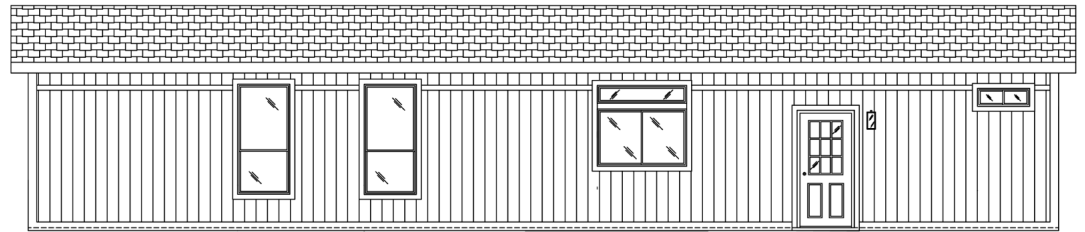


OPT. DEN I.P.O. BEDROOM

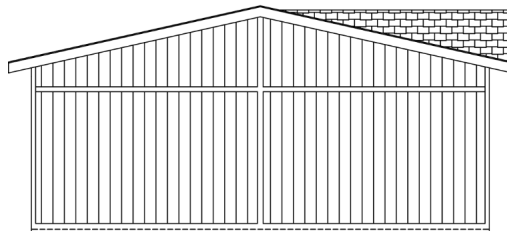
**02 FRONT ELEVATION**



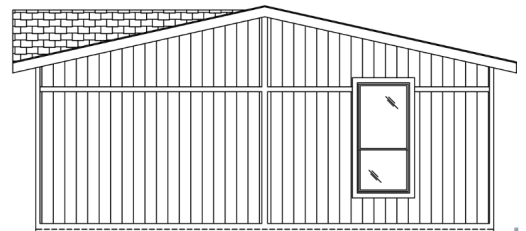
FRONT SIDEWALL



REAR SIDEWALL



REAR ENDWALL



FRONT ENDWALL

# The Columbia River 2024

3 Bedrooms | 2 Bathrooms | 1,600 sq ft

## STANDARD FEATURES

- ✓ Energy Star Rating on home
- ✓ LP Smartside Panel Siding
- ✓ Weather Resistant House Wrap Under Siding
- ✓ Large Dormer with Board and Batten Accent Area
- ✓ Oversized Eaves and Overhangs
- ✓ Architectural Shingles with Lifetime Warranty (Limited)
- ✓ Sherwin Williams Paint - Interior and Exterior
- ✓ Tape and Texture with Square Corner Drywall
- ✓ Baseboard Molding in Vinyl Floor Areas
- ✓ 9' Tall Flat Ceilings
- ✓ Hardwood Cabinets with 42" Tall Overhead Cabinets
- ✓ 6" Recessed LED Lighting
- ✓ Ceiling Fan Ready in Living Room and Family Room
- ✓ Fiberglass Tubs and Showers
- ✓ Pfister Faucets Throughout
- ✓ Congoleum LUX Vinyl Flooring
- ✓ Shaw 25 ounce Stain Resistant Carpet
- ✓ Kwikset Door Hardware
- ✓ 6 Panel Front Door & 9 Lite Rear Door
- ✓ ecobee Smart Thermostat
- ✓ Carrier SmartComfort Electric Furnace
- ✓ 2"x6" Exterior Walls
- ✓ 2"x4" Interior Walls

## STAINLESS STEEL APPLIANCE PACKAGE

- ✓ Side by Side Energy Star Refrigerator with Ice and Water
- ✓ Energy Star Dishwasher
- ✓ Above Range Microwave
- ✓ Smooth Top Electric Range

## MOST POPULAR UPGRADES

- ✓ 2"x6" Exterior Walls
- ✓ Crown Moulding on Upper Cabinets
- ✓ Energy Star Compliant Home
- ✓ Highland Exterior
- ✓ Optional Kitchen Island (Model Specific)
- ✓ Pendant Lights
- ✓ Full Tile Backsplash in Kitchen
- ✓ 2x8 Floor Joist

**Heritage Home Center**

Washington's Price and Volume Leader

**(425) 353-5464**

CALL TO TOUR

[Request Firm Quote](#)

EMAIL US

Features/specs subject to change.

# The Columbia River 2024

3 Bedrooms | 2 Bathrooms | 1,600 sq ft

---

- ✓ Congoleum LUX Vinyl Flooring Throughout
- ✓ Baseboard Moulding Throughout
- ✓ Cabinet Match Floor Quarter Round
- ✓ Shaw 40 ounce Stain Resistant Carpet
- ✓ 4:12 Roof Pitch with Vaulted Ceilings
- ✓ Skylight
- ✓ Laundry Overhead Cabinets with Hanging Rod

---

**Heritage Home Center**  
Washington's Price and Volume Leader

**(425) 353-5464**

— CALL TO TOUR

**[Request Firm Quote](#)**

— EMAIL US

Features/specs subject to change.

# The Columbia River 2024

3 Bedrooms | 2 Bathrooms | 1,600 sq ft

## Photo Gallery



Photo 1



Photo 2

**Heritage Home Center**  
Washington's Price and Volume Leader

**(425) 353-5464**

— CALL TO TOUR

**[Request Firm Quote](#)**

— EMAIL US

Features/specs subject to change.